

Santa Clara Sporting Green B99

Santa Clara, CAN
 B99 total strength=1872
 attack=42.16 defense=40.14

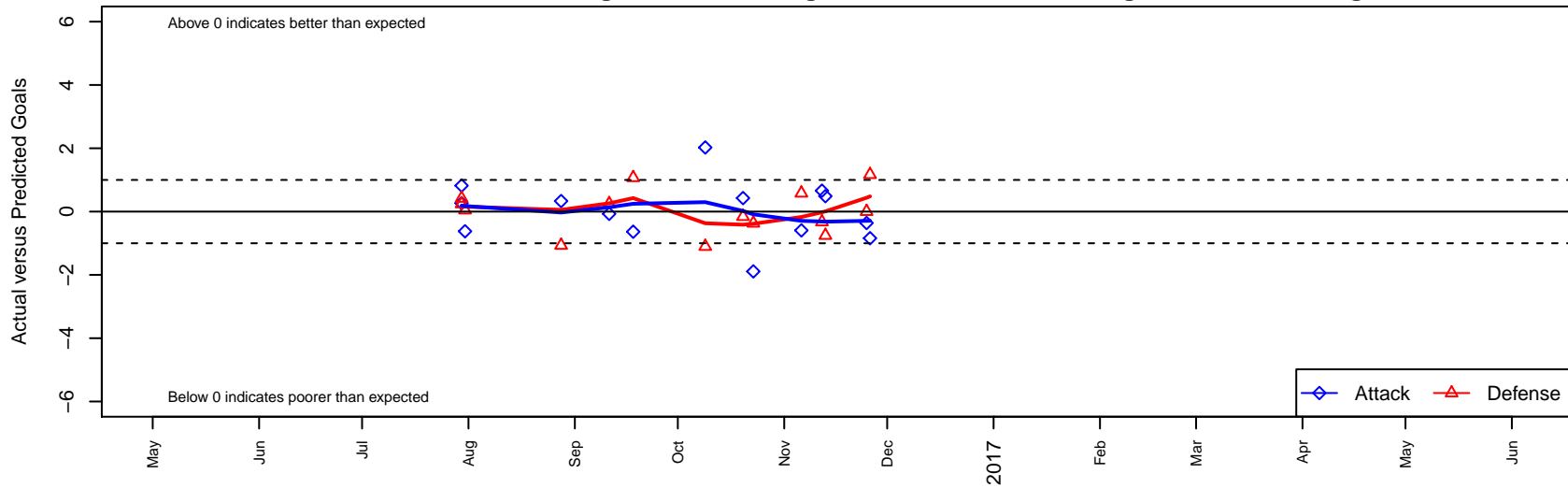
alt names used:

SANTA CLARA SPORTING 99B GREEN (CAN)
 SANTA CLARA SPORTING 99B GREEN
 SANTA CLARA SPORTING 99B GREEN (CAN)

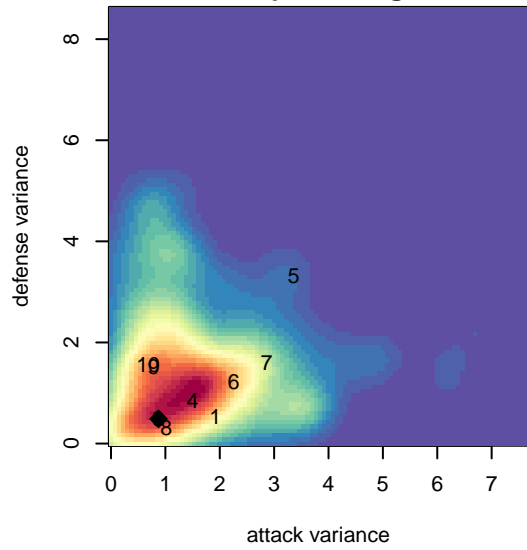
Venues played:

2016 Surf Cup Super Black U18
 2016 FWRL CAN CRL U18
 2016 Surf College Showcase Super Black U18

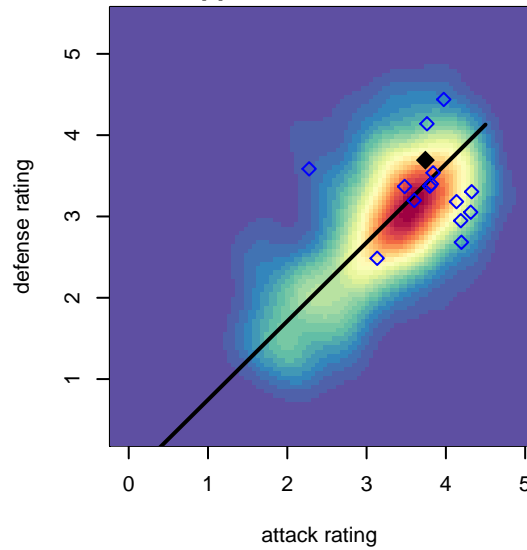
Santa Clara Sporting Green B99
 Dots are actual minus expected GF (blue circles) and GA (red triangles).
 Blue line is smoothed change in attack strength. Red is smoothed change in defense strength.



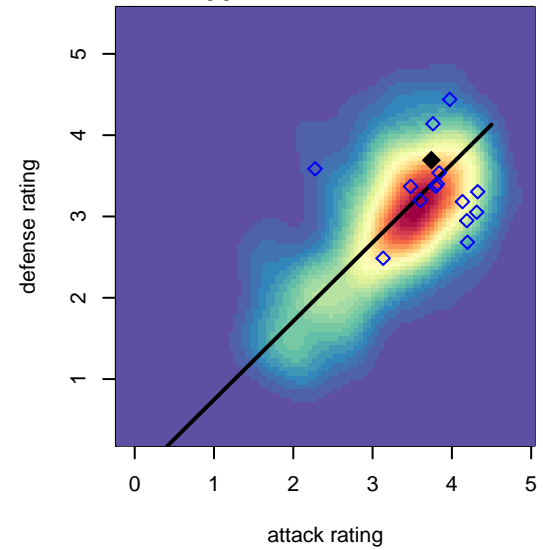
**attack and defense variance (black dot)
relative to other teams
and top 10 in region**



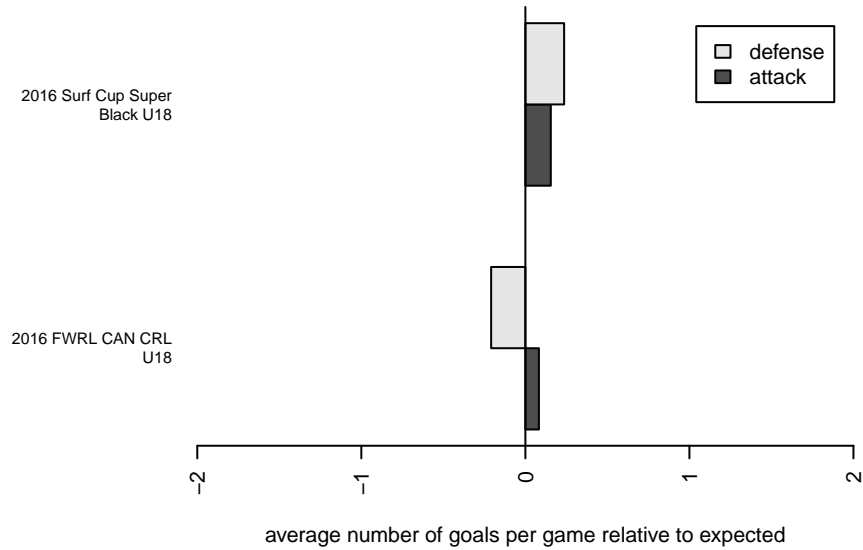
**attack and defense rating
relative to others at age
and all opponents in last 13 months**



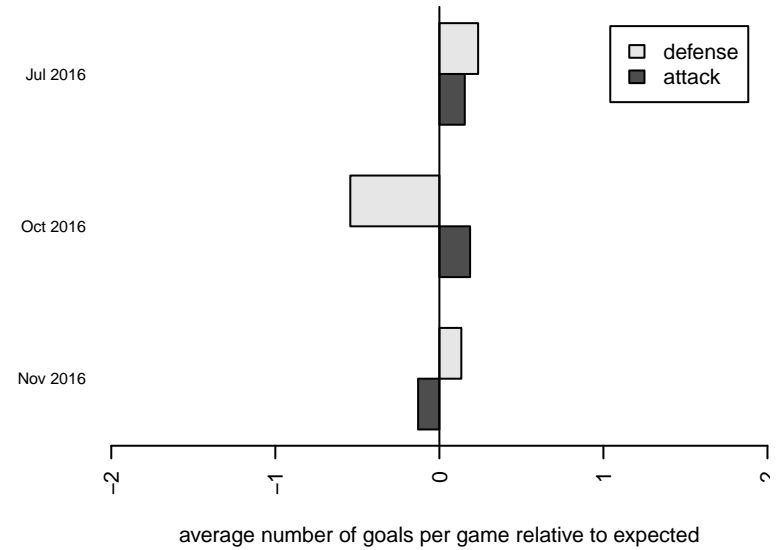
**attack and defense rating
relative to others at age
and all opponents in last 13 months**



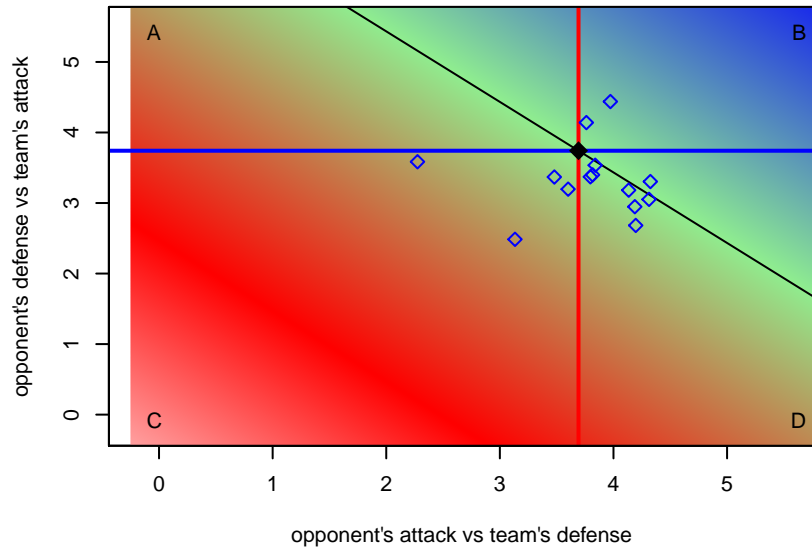
Performance relative to 13 month average



Performance relative to 13 month average



Distribution of opponents
 Red = Lose zone, Blue = Win zone, Green = Even
 Black line separates win/lose zones



lot. A=Neither has attack advantage, B=Opponent has both attack and defense advantage, C=Opponent has both attack and defense disadvantage, D=Both have

date	home		away		venue	pred.home	pred.aw
6-11-26	Santa Clara Sporting Green B99	0	FC Golden State B99	0	2016 Surf College Showcase Super Black U	0.84	1.17
6-11-25	Fullerton Rangers White B99	1	Santa Clara Sporting Green B99	1	2016 Surf College Showcase Super Black U	1.00	1.36
6-11-13	Santa Clara Sporting Green B99	1	Peninsula SC Galaxy Blue B99	2	2016 FWRL CAN CRL U18	0.51	1.25
6-11-12	California Northstars B99	2	Santa Clara Sporting Green B99	3	2016 FWRL CAN CRL U18	1.67	2.34
6-11-06	Santa Clara Sporting Green B99	3	Kings Country SC Atletico B99	0	2016 FWRL CAN CRL U18	3.59	0.58
6-10-23	Santa Clara Sporting Green B99	1	San Francisco Mission Green B99	2	2016 FWRL CAN CRL U18	2.89	1.63
6-10-20	Burlingame Gold B99	1	Santa Clara Sporting Green B99	2	2016 FWRL CAN CRL U18	0.84	1.57
6-10-09	Santa Clara Sporting Green B99	4	Tecos Hayward SC Fire B99	3	2016 FWRL CAN CRL U18	1.97	1.90
6-09-18	California Magic SC B99	0	Santa Clara Sporting Green B99	1	2016 FWRL CAN CRL U18	1.07	1.64
6-09-11	Santa Clara Sporting Green B99	1	El Camino Real Salinas Pumas B99	1	2016 FWRL CAN CRL U18	1.07	1.25
6-08-28	South San Francisco United Force B99	2	Santa Clara Sporting Green B99	2	2016 FWRL CAN CRL U18	0.93	1.67
6-07-31	LA Premier B99	2	Santa Clara Sporting Green B99	1	2016 Surf Cup Super Black U18	2.05	1.62
6-07-30	Santa Clara Sporting Green B99	2	Irvine Slammers B99	1	2016 Surf Cup Super Black U18	1.73	1.42
6-07-30	Next Generation USA B99	0	Santa Clara Sporting Green B99	2	2016 Surf Cup Super Black U18	0.24	1.18